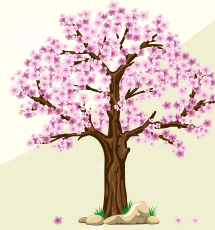


Oakthorpe News



Spring

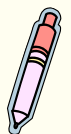


Spring is now in full swing and then children are really enjoying spending their break and lunchtimes in the sunshine. I always love hearing the giggles and laughing when the children play together.

We have been checking in on our progress this week for our phonics, reading, writing and maths. I have been pleased with everyone's positive attitudes towards their learning and using these assessments as a way to show off what they know. The children are working very hard and it is clear to see from their outcomes that they are remembering more and more each day! Myself and the class teachers are working hard on pin-pointing what children need to do next to be more confident so please look out for any extra bits of homework or things to work on. Every little bit of help at home really does support children in remembering their learning more.

We had a special assembly this week to talk about the importance of Water Safety. Vicky from Splish Splash at Ashby came to tell us all about how we can keep ourselves safe near water, just like the lake in Oakthorpe, as well as when we are at the beach. Our children were great at talking about what they do at home to stay safe, even in smaller amounts of water like the bath and the paddling pool.

A big thank you to all of the Special Women who came along to our assembly. We really enjoyed you all coming along and we hope you enjoyed it too!



Parents

Year group	Attendance % We want to beat national and be over 95%
R	97.5%
1	96.8%
2	94.07%
3	96.74%
4	100%
5	87.5%
6	100%

Attendance- Our attendance is improving across the whole school so well done everyone! Great work Year 4 and Year 6!

Relish Payments- I would advise parents to set up a payment routine of pre-loading dinner money onto the Relish account rather than paying off after meals have been ordered. There are very strict requirements for dinner debt. As always, if you need support with dinner debt, please come and speak to us asap.

Oakthorpe Dates

Spring 2024-
2025



Spring Term

Monday 24th February- Children will be in school

Monday 3rd March- World Book Week begins -please see Dojo for further information

Wednesday 5th/Thursday 6th March- Parent's Evening

Thursday 20th March- Innovators trip to Tamworth Castle

Wednesday 26th March- 'Special Women'- Mother's Day celebration

Friday 11th April- Year 3/4 Assembly/LAST DAY OF TERM

Easter Holiday

Monday 28th April - Children will be in school

Monday 5th May- Bank Holiday- School Closed

Wednesday 7th May- Year 4 Rise Voices trip

Monday 12th May- Year 6 SATs week

Wednesday 14th May- Creators trip to Twycross Zoo

Wednesday 21st May- Year 6 Warning Zone trip

Friday 23rd May- Last day of half term

Please note change in date

BE A STAR

- SIT UP
- TRACK THE SPEAKER
- ANSWER QUESTIONS
- RESPECT OTHERS

STEP

- SPEAK POLITELY
- THANK YOU
- EXCUSE ME
- PLEASE

SHAPE

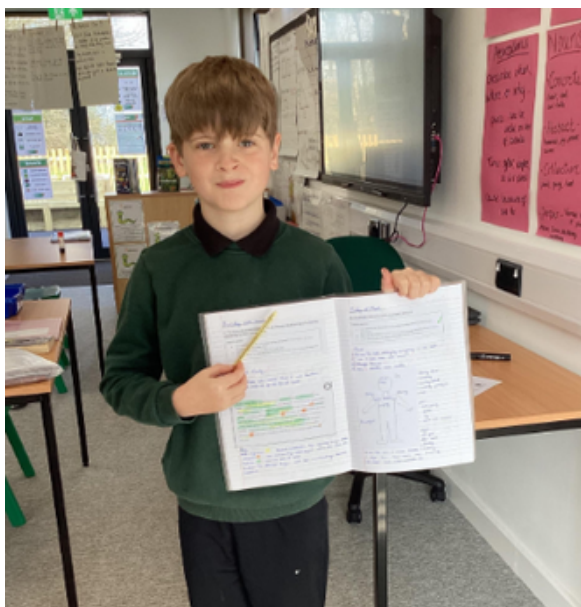
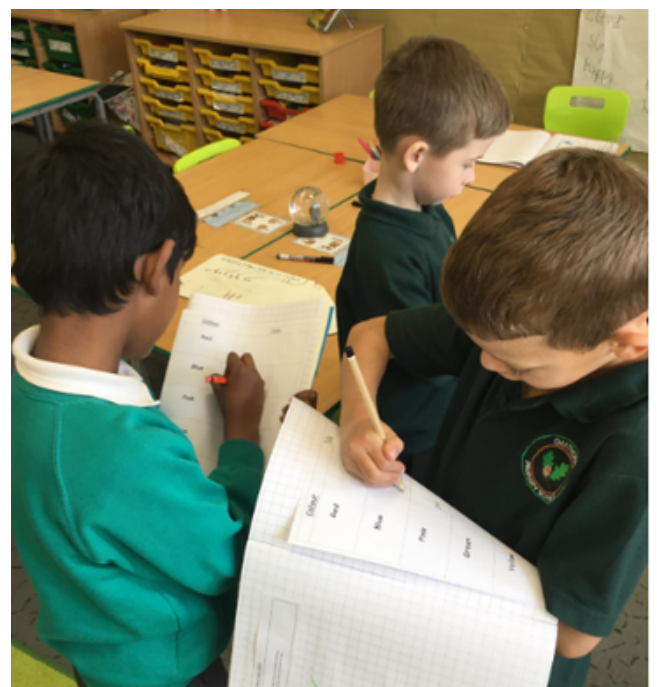
- SENTENCES
- HANDS DOWN
- ARTICULATE
- PROJECT
- EYE CONTACT

FIRST TIME

- FIRST TIME
- EVERY TIME
- EVERYWHERE
- EVERYONE

Fantastic Walking

- WALK IN SINGLE FILE
- WALK ON THE LEFT-HAND SIDE
- WALK QUIETLY
- WALK WITH GOOD POSTURE- HEAD HELD HIGH, SHOULDERS BACK
- SMILE AS YOU PASS PEOPLE



Attendance Matters

Autumn ailments

Did you know that children can still attend school with a cough and a cold? Minor medical ailments such as headaches, coughs, colds, toothache and stomach ache can all be helped with over-the-counter medicines. These medicines should be administered before school to give your child the best chance of being able to still attend school. School will contact parents/carers if any child becomes too unwell to remain in school.

What happens if my child misses school?

There are many consequences of children missing time in school, such as:

- missing out on key learning and creating gaps in knowledge
- missing out on key social times with friends
- increasing anxiety and worries
- feel less of a sense of belonging

What happens if my child is late to school?

There are many consequences of children being late to school:

- missing out on important routines
- increased feelings of embarrassment upon arrival
- missing out on the main input of lessons, leading to not understanding their learning

We want to support all of our families in ensuring that all children have attendance over 95%. PLEASE ask for support from school to make this happen.